

Analyze and Comparison of a LiNO₃-NH₃ Absorption System Operating at Three Pressure Levels

Ridha Ben Iffa, Lakhdar Kairouani, Nahla Bouaziz

Unité de Recherche Energétique and Environnement, Ecole Nationale d'Ingénieur de Tunis

Université de Tunis EL Manar, BP37, le Belvedere 1002, Tunisia.

r.iffa@yahoo.fr

Lakdar.Kairouani@enit.rnu.tn

nahlabouaziz@yahoo.fr

Abstract—The present study deals with a compression-absorption machine. The proposed hybrid cooling system uses NH₃-LiNO₃ as a working fluid and operates at three pressure levels. The absorber is at an intermediate pressure (Pint) taken between the evaporator pressure (PEV) and the condenser pressure (PCD), unlike the single stage machine, which works between two pressure levels. The proposed new system is studied and compared to the conventional machine. In order to evaluate the performance of the invoked system, a procedure based on the MAPLE software is set up to compute accurately the thermodynamic properties of the working fluid. The analyses of the numerical results highlight that the performance of the novel proposed configuration is better than that relative to the conventional cycle. The study reveals the great impact of the intermediate pressure on the performance improvement and on reducing the generator temperature allowing the system to work at low enthalpy sources. In fact, for an evaporator temperature and a condenser temperature fixed respectively at -10 and 40°C, the proposed hybrid refrigeration cycle operates at a generator temperature TGE <75°C and the installation's COP is about 0.53. While for the same conditions, the single stage machine COP cannot exceed 0.5 with a generator temperature of about 110°C.

Keywords— Absorption, LiNO₃, COP, hybrid, refrigeration

I. INTRODUCTION

Refrigeration is one of the leading consumers of electric power in the world. It is encountered in everyday life and it is greatly used in human activity. Its applications are numerous in many fields and sectors, such as agriculture, industry and commercial sector [1]. For these reasons, the valorization of energy from low enthalpy resources is today of a great interest. These calories can be retrieved through three-thermal cycles. This work is part of the systems development. We focus particularly on the single and double stage three-thermal absorption machine, operating with water-ammonia. The main objective is to adapt them to the low temperature heat sources [2]. In this investigation we attach a particular interest to the optimization of the system's performance and the minimization of energy consumption of refrigeration cycles ([3], [4]). In fact, a single-stage machine, Fig.1, composed of an evaporator, an absorber, a pump, a generator, a condenser, two generators and an interexchange solution, has been frequently studied ([5], [6]). We note that this standard absorption system using NH₃-H₂O cannot be operating at a

generator temperature below 100°C, for a condensing and evaporating temperature respectively of 40 and -10°C. In addition, the maximum value of the single-stage absorption COP is approximately equal to 0.51 [7]. Besides, it has been proved that if the number of stages increases the coefficient of performance decreases [8]. In the present work, we propose a new configuration of a hybrid lithium nitrate absorption operating at three pressure levels. The novel configuration object of this study presents the double advantage of operating at low enthalpy sources and respected the same COP.

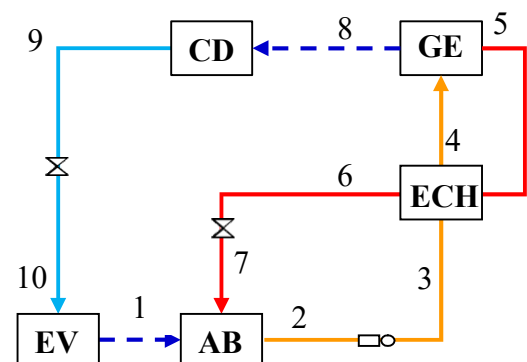


Fig. 1 Conventional cycle

II. MODELING

Several authors have studied different models of absorption machines using NH₃ / LiNO₃ as working fluids ([9], [10]). The absorption machine consists of six main elements evaporator, absorber, pump, generator, condenser and expansion valve. Some systems are composed of simple stage machine [11], and others are formed by a succession of stages with various component associations and sometimes inserting other new components ([12], [13]). To model an absorption cooling cycle, it is sufficient to model each component of the refrigeration cycle ([14], [15]). Subsequently, we present the simple effect absorption machine and we develop a novel absorption hybrid configuration. We will explain and quantify its adaptability to low-enthalpy sources. The components of the conventional system are the evaporator, the absorber, the pump, the generator, the condenser and two valves: one is used for the poor solution return to the absorber and the other

for the refrigerant relaxation in the evaporator. It is well known that a single stage cooling system works between two pressure levels: evaporator pressure (PEV) and condenser pressure (PCD) [16]. We have shown in a previous work that the conventional absorption machine, using NH₃-LiNO₃ as a working fluid, cannot operate with a generator temperature below 95°C with evaporator and condenser temperature fixed respectively to -10 and 40°C [9]. Indeed, its coefficient of performance (COP) cannot exceed 0,34. We keep in mind that the theoretical COP is calculated by considering the following assumptions:

- (i) The temperature at each main component is uniform.
- (ii) The refrigerant vapour is in thermodynamic equilibrium with the rich solution at the absorber entrance and the poor solution leaving the generator.
- (iii) The fluid at the generator outlet can be considered in a saturated state with a steam quality less than unity [17].

In this study, the conventional absorption cycle parts are shown in Fig. 1 and the corresponding cycle on the Oldham diagram is represented in Fig. 2. Subsequently, we propose the novel refrigeration system object of this work. The enhanced configuration is operating at three pressure levels. This machine is composed by an evaporator, an absorber, a generator, a condenser and a compressor inserted between the evaporator and the absorber. The cycle parts are represented in Fig. 3 and the corresponding cycle on the Oldham diagram is represented in Fig. 4. In the following, we develop the energy and mass balance. The specific solution circulation factor represents the mass of solution per kg of refrigerant vapor evaporated in the generator.

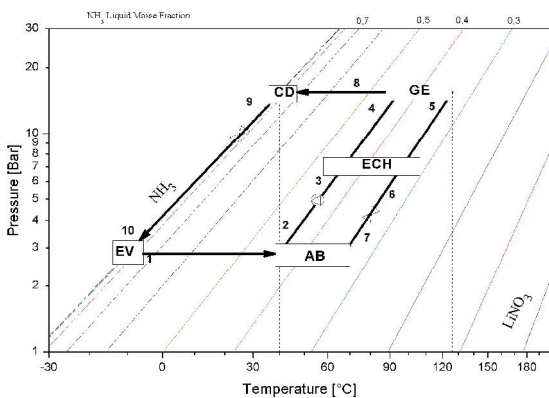


Fig. 2 Diagram of Oldham for conventional machine

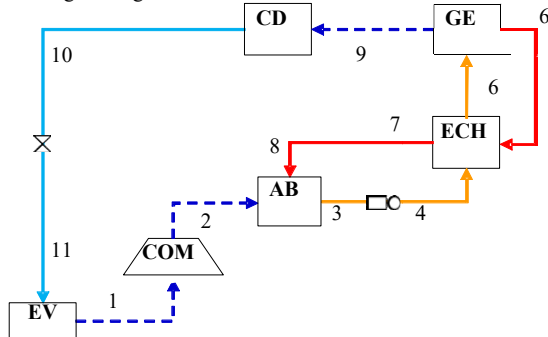


Fig. 3 Proposed hybrid configuration

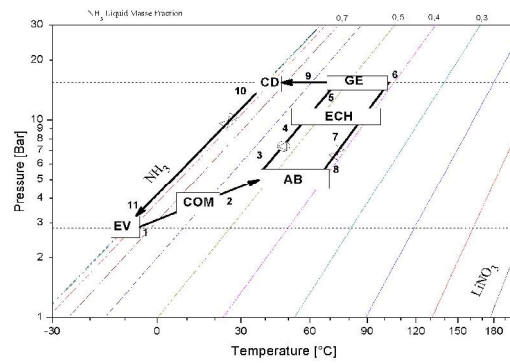


Fig. 4 Diagram of Oldham for proposed configuration

TABLE I

ENERGY BALANCE IN EACH COMPONENT OF THE HYBRID ABSORPTION SYSTEM

Component	Energy balance
Condenser	$\dot{m}_9 = \dot{m}_8 = \dot{m}_{NH3}$ (1)
	$T_9 = T_{CD}$ (2)
	$h_9 = h(T_{CD})$ (3)
	$P_9 = P(T_{CD}) = P_{CD}$ (4)
	$Q_{CD} = \dot{m}_{NH3}(h_8 - h_9)$ (5)
Evaporator	$\dot{m}_{10} = \dot{m}_1 = \dot{m}_{NH3}$ (6)
	$T_1 = T_{EV}$ (7)
	$h_{10} = h_9, h_1 = h(T_{EV})$ (8)
	$P_{10} = P_1 = P(T_{EV}) = P_{EV}$ (9)
	$Q_{EV} = \dot{m}_{NH3}(h_1 - h_{10})$ (10)
Generator	$\dot{m}_5 = \dot{m}_6 + \dot{m}_8$ (11)
	$T_8 = T(x_5, P_{CD}), T_6 = T_{GE}$ (12)
	$h_6 = h(x_9, P_{CD}) = h(x_5, P_{CD})$ (13)
	$P_5 = P_6 = P_9 = P(T_{CD}) = P_{CD}$ (14)
	$x_6 = x(T_6, P_{CD}), x_5 = x_5 + \Delta x$ (15)
	$Q_{GE} = \dot{m}_{NH3}(h_8 + (f - 1) \cdot h_6 - f \cdot h_5)$ (16)
Absorber	$\dot{m}_3 = \dot{m}_2 + \dot{m}_1$ (17)
	$T_3 = T_{CD}$ (18)
	$x_3 = x_1 + \Delta x$ (19)

The entrainment factor is defined by :

$$f = \frac{1 - S_5}{S_4 - S_5} \quad (20)$$

Table 1, represents the energy balance in each component of the installation, exchanging heat or work with the external environment. Neglecting the rectifier column.

In order to determine the compressor power, we consider the following hypothesis:

- (i) At the evaporator outlet (EV), vapor ammonia is assimilated as an ideal gas, so we have:

$$T_1 \times P_1^{(k-1)/k} = T_2 \times P_2^{(k-1)/k} \quad (21)$$

- (ii) In an ideal case, adiabatic process, it consumes power given by:

$$Q_{is} = c_{pNH3} * (T_2 - T_1) \quad (22)$$

Considering the isentropic efficiency, the real power is defined as follows:

$$Q_{réel} = \frac{Q_{is}}{\eta_{is}} \quad (23)$$

$$\text{Where } Q_{réel} = \dot{h}_2 - \dot{h}_1 \quad (24)$$

So we can deduce from the two previous expressions the value of the steam enthalpy at the compressor outlet:

$$h_2 = h_1 + \frac{Q_{Zs}}{y_{is}} \quad (25)$$

The term performance is determined as follows [18]:

$$s_{is} = 0.874 - 0.0135 - r \text{ and } r = \frac{P_2}{P_1} \quad (26)$$

We deduce the COP from the generator conservation:

$$COP = \frac{Q_{Ev}}{Q_{GE}} = \frac{h_1 - h_{10}}{h_8 + (f-1) \cdot h_6 - f \cdot h_5 + h_1} \quad (27)$$

III. COMPARISON WITH NH₃/H₂O

To validate this cycle working with lithium nitrate, we selected performance data by ([9], [19]), for the comparison of the COP.

Operating conditions are chosen:

- Exchanger Efficiency $\Pi=0.8$
- Condenser temperature TCD=40°C
- Absorber temperature TAB= TCD=40°C
- Evaporator temperature TEV = -10°C
- Generator temperature TGE=(75°C-135°C)

TABLE 2
TABLE OF COMPARISON

TGE	COP This study	COP Bouaziz et al	COP Best et al	\bar{COP}_1	\bar{COP}_2	Gap ₁	Gap ₂
80	0.350	-	-	0.35	0.35	-	-
85	0.480	0.357	-	0.123	0.48	34.45	-
90	0.512	0.474	-	0.038	0.512	8.02	-
95	0.524	0.504	0.013	0.02	0.511	3.97	3930
100	0.530	0.515	0.146	0.015	0.384	2.9	263
105	0.532	0.520	0.217	0.012	0.315	2.3	145.16
110	0.533	0.522	0.260	0.011	0.273	2.1	105
115	0.533	0.521	0.288	0.012	0.245	2.3	85.07
120	0.533	0.519	0.307	0.014	0.226	2.7	73.61
125	0.532	0.517	0.320	0.015	0.212	2.9	66.25
130	0.532	0.516	0.330	0.016	0.202	3.10	61.21
135	0.530	0.514	0.337	0.016	0.193	3.11	57.27

We notice after this table that the largest difference is [9], it returns to the absence of intersolution exchanger in the installation.

IV. RESULTS AND DISCUSSION

Several studies have been devoted to determine the COP and limitations of the absorption system operating conditions ([18], [19]).

In order to evaluate the refrigeration absorption system performance, we have developed a numerical program. The calculating procedures of the fluid thermodynamic properties and the performance coefficient were made using MAPLE computer tools. The numerical simulation, developed in the present investigation carries out a comparative study of the two systems performances.

Fig. 5 shows the COP's evolution versus the generator temperature, for an evaporator temperature and a condenser temperature fixed respectively to -10 and 40°C. For the novel configuration, the absorption pressure is fixed to 615 kPa.

The analysis of Fig. 5 shows that for the new proposed absorption machine, the coefficient of performance is higher than that relative to the classic system of TGE between 75°C and 120°C. It's about 0.53. While for the conventional configuration, the COP cannot exceed this value.

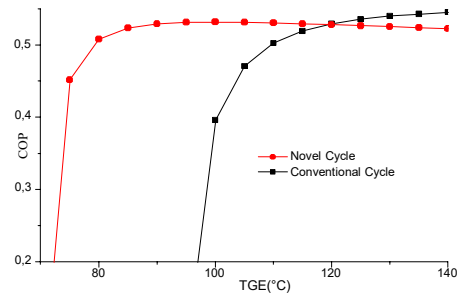


Fig. 5 COP evolution versus TGE for the conventional cycle and the novel configuration

On the other hand, the operating temperature is relatively low, around 70°C compared to that relative to the simple effect cycle which is about 100°C. In addition, even for high temperature generator (120°C >TGE>100°C) the COP continues to be higher than that relative to the conventional cycle.

Besides we note that for the installation object of this work, a new parameter reveals interesting to study the performance of the cycle. It's the pressure of the absorber that is an intermediate pressure (Pint) as shown in Figure 6.

For a condensation temperature of 40°C and an evaporation temperature of -10°C, Fig. 6 presents a family of curves showing the COP evolution versus the generator temperature for different intermediate pressure. We note that the new machine works on the whole domain of temperature and its coefficient of performance increases if the intermediate pressure increases. Besides, the operating temperature (TGE) decreases if the pressure of the absorber increases.

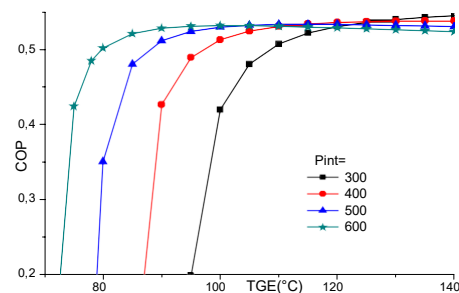


Fig.6 COP Evolution versus TGE with TEV = -10°C and TCD = 40°C for different intermediate pressure

The enhanced configuration, object of this investigation allows consequently a gain of energy and gives the possibility to operate at low enthalpy sources.

On the other hand, we note that the COP depends mainly on the evaporating temperature (necessary for the production of the desired cold), the condensation temperature (function of cooling temperature of the absorber and condenser components) and finally generator temperature.

Fig. 7 shows the COP evolution versus TGE for different TCD, with TEV = -10°C and Pint = 495kPa.

Fig. 8 shows the COP evolution versus the intermediate pressure (pressure of the absorber) for $T_{GE} = 80^{\circ}\text{C}$, an evaporator temperature and a condenser temperature fixed relatively to -10 and 30°C . We recall that under these conditions, the COP of the conventional system does not exceed 0.5.

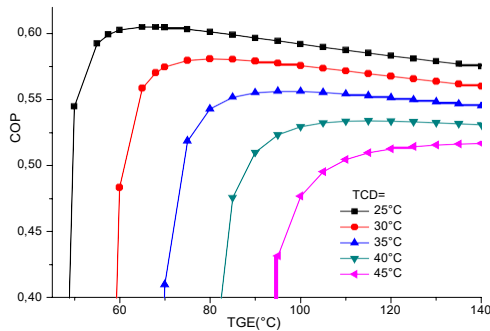


Fig.7 COP evolution versus TGE with TEV = -10°C and $P_{int} = 495$ kPa for different TCD.

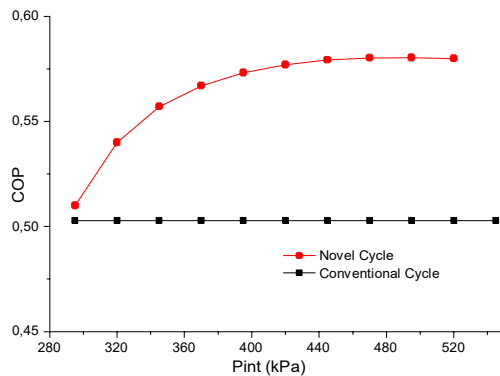


Fig.8 COP evolution versus P_{int} for $T_{GE}=80^{\circ}\text{C}$, $T_{CD}=30^{\circ}\text{C}$ and $TEV=-10^{\circ}\text{C}$

V. CONCLUSION

In this investigation, we proposed a novel configuration of an absorption cooling machine using lithium nitrate- ammonia as a working fluid and operating at three pressure levels.

The proposed hybrid cycle, where the absorber is at an intermediate pressure taken between the evaporator and the condenser pressure, is analyzed and compared to the conventional cycle. The numerical simulation highlights the improved performance of the novel system. It shows the double advantage of the hybrid absorption configuration. In fact the hybrid configuration presents the opportunity to operate at low enthalpy source with a better COP. For an evaporator temperature and a condenser temperature fixed respectively to -10°C and 40°C , the compression-absorption machine operates at a generator temperature, $T_{GE} < 75^{\circ}\text{C}$ with an installation's COP about 0.53 while for the same conditions, the one stage machine, functioning at two pressure levels has a COP which cannot exceed 0.5 with a generator temperature of about 110°C . The numerical simulation results carried out in this investigation shows also that the intermediate pressure has not only influence on the COP enhancement of the refrigeration cycle but it also has a great impact on reducing the generator temperature.

Consequently, it contributes to the adaptability of refrigeration systems to low temperature sources allowing the use of waste heat and the solar energy.

ABBREVIATIONS

COP, Coefficient of performance; **F**, circulation ratio; **h**, specific enthalpy (J/kg); \dot{m} , mass flow rate(kg/s); **P**, pressure (bar, Pa); \dot{Q} heat-transfer rate (W); **T**, temperature (K, $^{\circ}\text{C}$); **X**, mass fraction. **AB**, Absorber; **CD**, condenser; **COM**, compressor; **EV**, evaporator; **GE**, generator; η , efficiency (%).

REFERENCES

- [1] Thioye M. Amélioration de la performance des machines frigorifiques à absorption par l'utilisation de cycles à absorption et désorption étagés. *Int. J. Refrig.*, 20(2): 136-145. (1997)
- [2] S.B. Riffat, G. Qiu. Comparative investigation of thermoelectric air-conditioners versus vapour compression and absorption air-conditioners. *App. Th. Eng.* Vol 24 pp.1979-1993. (2004)
- [3] Gökten S Performance analysis of a heat engine driven combined vapor compression-absorption-ejector refrigerator. *Energy Convers. Mgmt.* vol 41:pp.1885-1895. (2000).
- [4] Laouir A, Legoff P, Hornt JM. Cycle de frigopompes à absorption en cascades matérielles, détermination du nombre d'étages optimal pour le mélange ammoniac-eau. *Int. J. Refrig.*, 25: pp.136-148. (2002)
- [5] Mumah SN, Adefila SS, Arinze EA. *Energy convers. Mgmt.*, 35 (N8): pp.737-750. (1994)
- [6] Alvares SG, Trepp C. Simulation of solar driven aqua-ammonia absorption refrigeration system. *Int. J. Refrig.*, 10:pp. 40-49. (1987)
- [7] Syed MT, Siddiqui MA. Performance and economic study of the combined absorption/compression heat pump. *Energy Convers. Mgmt.*, 40: pp.575-591. (1999)
- [8] Hulten M, Berntsson T. The compression/absorption heat pump cycle-conceptual design improvements and comparisons with the compression cycle. *Int. J. Refrig.*, 25:pp 487-497. (2002)
- [9] R. Best, L. Porras and F. A. Holland. Thermodynamic design data for absorption heat pump systems operating on ammonia-lithium nitrate-part one cooling. *Heat recovery System & CHP* 11(1),pp 49-61. (1991)
- [10] Da-Wen Sun, Comparison of the performances of $\text{NH}_3\text{-H}_2\text{O}$, $\text{NH}_3\text{-LiNO}_3$ AND $\text{NH}_3\text{-nascn}$ absorption refrigeration systems. *Energy Convers. Mgmt.* 39. pp 357-368. (1998)
- [11] Robert M, Tozer. Fundamental thermodynamics of ideal absorption cycles. *Int. J. Refrig.*, 20:pp 120-135. (1997)
- [12] S. Arh and B. Gaspersic. Development and comparison of different advanced absorption cycles. *Rev. Int. Froid.* 13,pp 41-50. (1990)
- [13] Sahina B, Kodala A. Thermoeconomic optimization of double-stage combined refrigeration system: a finite-time approach. *Int. J. Refrig.*, 25:pp 872-877. (2002)
- [14] Fukuta M, Yanagisawa T, Iwatab H, Tadab K. Performance of compression/absorption hybrid refrigeration cycle with propane/mineral oil combination. *Int. J. Refrig.*, 25: pp.907-915. (2002)
- [15] Sun D, Eames IW, Aphornratana S. Evaluation of a novel combined ejector-absorption refrigeration cycle-I: computer simulation. *Int. J. Refrig.*, 19(3): pp.172-180. (1996)
- [16] Kang YT, Kunugi Y, Kashiwagi T. Review of advanced absorption cycles: performance improvement and temperature lift enhancement. *Int. J. Refrig.*, 23: pp. 388-401. (2000)
- [17] Romero RJ, Guillen L, Pilatowsky I. Monomethylamine-water vapour absorption refrigeration system. *App. Th. Eng.*, 25: pp.867-876. (2005)
- [18] Kairouani L, Nehdi E, Ben Iffa R. Thermodynamic Investigation of Two-Stage Absorption Refrigeration System Connected by a Compressor. *Am. J. App.*, 2(6):pp 1036-1041. (2005)
- [19] N. Bouaziz, R. Ben Iffa and L. Kairouani, Performance of a water ammonia absorption system operating at three pressure levels. *JMER* 3,pp. 120-127. Apr.(2011);